

Clerks report Feb 2025

Financial-

- The Draft budget has been completed and has been submitted to Councillors for approval at the February Parish Council meeting.
- The precept increase request of 15% has been sent and receipt acknowledged by TBC.
- The Quarterly check has been carried out by Cllr V King. The next will take place in April 2025 to coincide with the end of the financial year.
- Pata provided the following information regarding the new 2025/2026 HMRC Tax and National Insurance Thresholds. 'Please note that from 6th April 2025 the employer National Insurance Contribution percentage rate will be increasing from 13.8% to 15% and the ST threshold (secondary threshold where employers national insurance is payable) will be reduced from £758 per month to £416 per month. Employers Allowance (if eligible) will increase from £5,000 per annum to £10,500 per annum, and the entitlement to claim it on a £100,000 or less Class 1 National Insurance bill for the previous tax year will be removed.'
- The request to investigate signatories for the Parish Bank Account is ongoing.
- Villager accounts have been checked and agreed by both the Clerk and the Villager Accounting team. Several invoices have been chased for non payment, with some already paid. A copy of the PC Villager income and expenditure will be sent to the Steering group at the start of each month for comparison.

Information update-

- MVH has been booked for the Annual Parish meeting MVH on Tuesday 8th April 2025, 7pm.
- The Defibrillator check has been carried out and registered. South West Ambulance service have been contacted to amend the registered email address for maintenance updates from the Village hall to the Parish Council.
- The Village design statement steering group have provided information on the date of their next meeting to the PC. Following this, Councillors requested that the Clerk followed up on the agreed villager article/ questionnaire and public information meeting discussed at the PC meeting on the 13th January 2025.
- The Cuttlefish PC website has now been built and the Clerk has attended an online training session to set this up. This will be an ongoing project as it will take time to move documentation across. The PC will be sent a copy of the training session if they wish to view the capabilities of the website, please let me know.
- New PC email address set up has been completed. Cuttlefish are currently awaiting details of the Clerk email address from the current provider in order to migrate emails across. When this has been completed, new email log in details will be sent to Councillors.

- Cllr C Thomas will be attending a discussion in February with TBC Director of Community around the Council's Sandbag Policy and to consider how we could work together better.
- The Enforcement query regarding the Air BNB discussed at the PC meeting in January has been submitted and no response has been received as yet.

Correspondence-

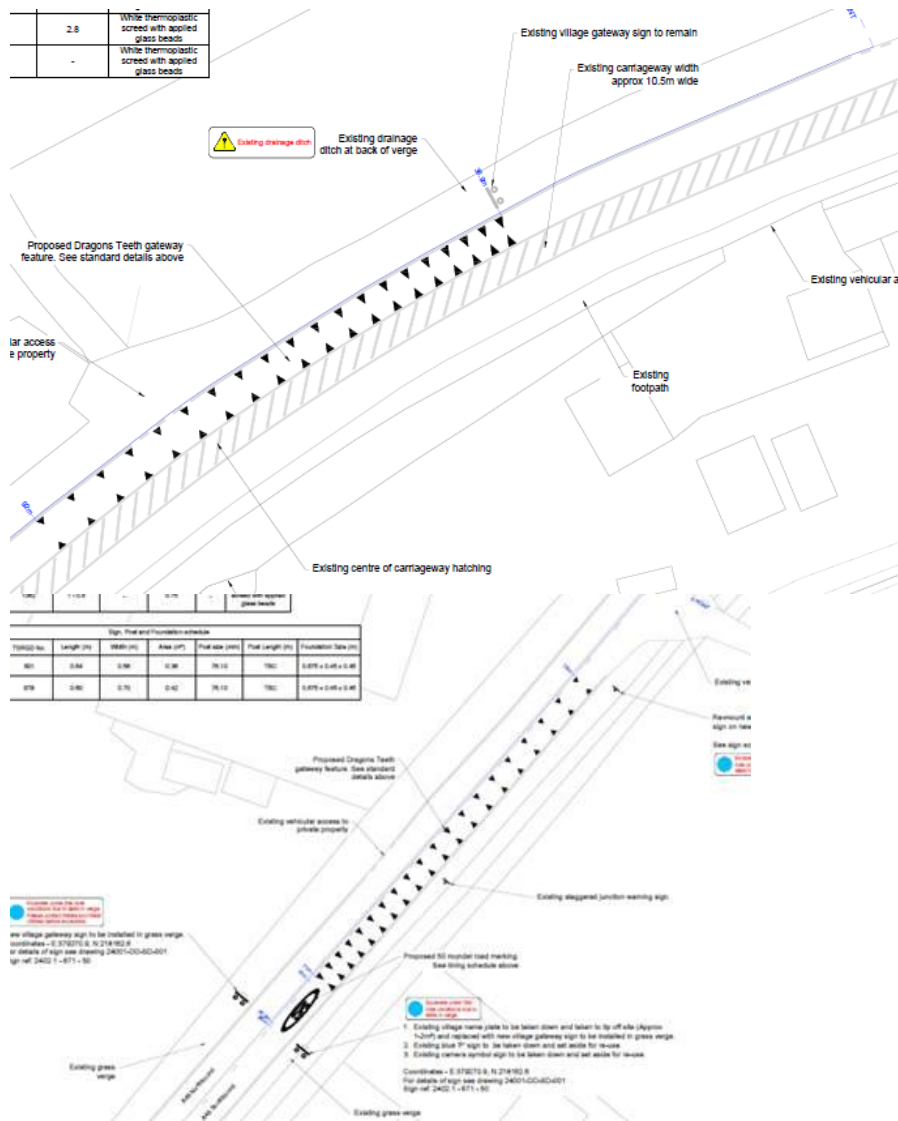
- Cllr McLain forwarded information from the Environment agency that advised that they have published [new flood and coastal erosion risk information](#) and updated the related digital services. The briefing sets out more information and explains how you can access these updated services on [GOV.UK](#) . Details have been sent to the PC.

Highways – The following updates were received by the PC regarding queries submitted by Cllr Blowey. These will be added to the minutes of the meeting.

- a. if a second Minsterworth sign is to be erected at the east end of the Village, on the opposite side of the carriageway to where the first sign was placed? –

The signage works that done recently were completed on the Eastern end – There should be two signs on the eastern end of the village, if there is not, there should be and I can raise with our contractors. On the Western end, there was not a proposal for a second sign. It was identified that there was not enough room to put another village gateway sign on the right hand side as you enter the village. There will be a “reminder” 50mph gateway signage a little further along the carriageway going into the village once TRO in place for 50mph around Oakle street area. The Road safety audit report Stage 2 picked up that it was not safe to have this on the bend combined with the village gateway sign.

Below extracts from what was installed



b. when can we expect the 50mph limit and central islands etc to be installed on the Oakle street stretch of the A48? –

The works for 50mph would be likely later summer / autumn at current progress due to priority in other locations for introducing ANPR average speed cameras . We plan to get crossings and other features installed sooner than cameras however these currently still in early design stage with be dependent of road space availability in the area and contractor availability to carry out the works.